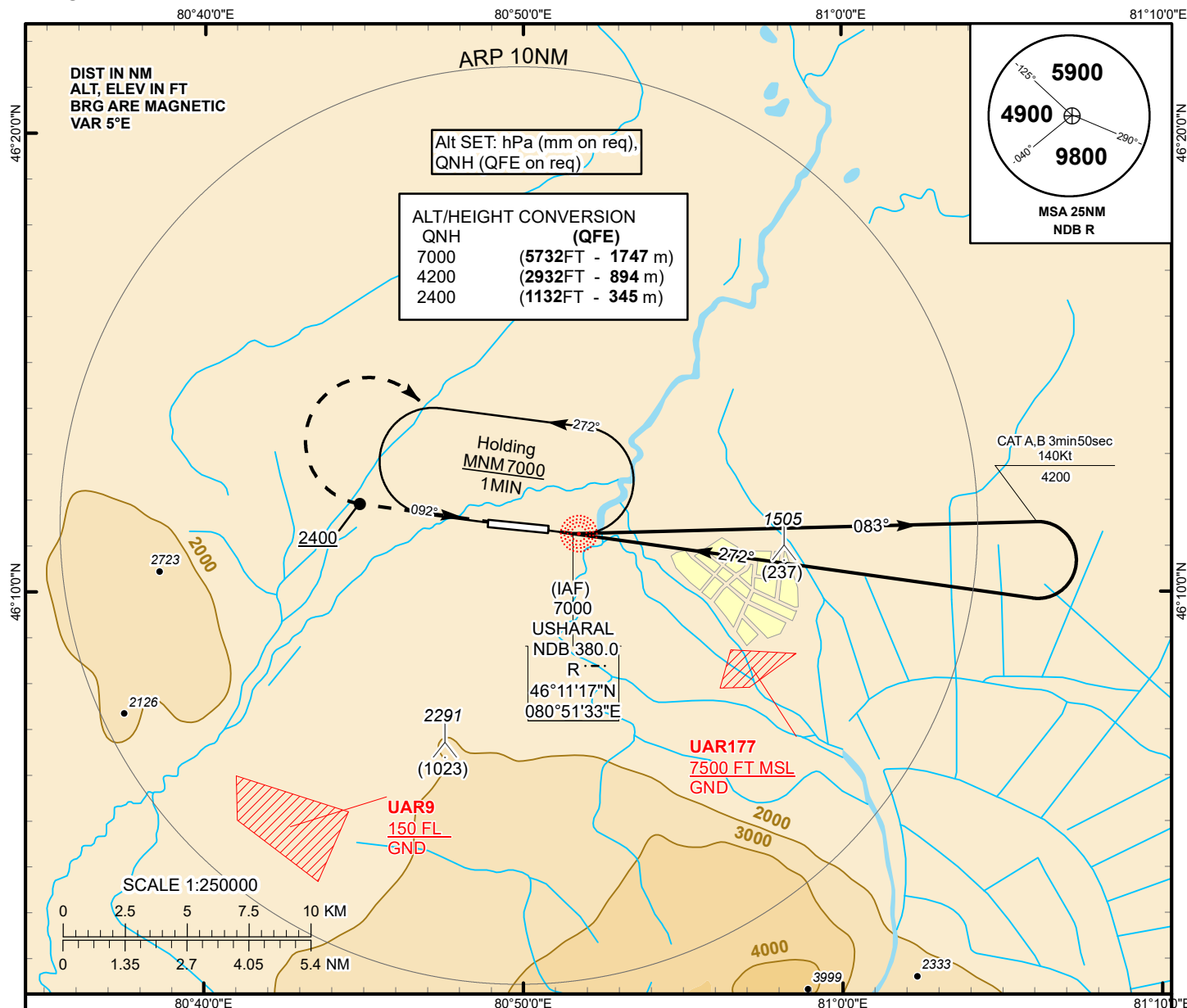


INSTRUMENT APPROACH
CHART
ICAO

AERODROME ELEV **1295ft**
HEIGHTS RELATED TO
THR RWY 27 - ELEV **1268ft**

USHARAL TOWER 118.1

USHARAL
NDB Y
RWY 27



MISSED APPROACH

Climb on track 272° to
2400 or above.
Turn RIGHT to NDB R.
Climb initially to 4200,
then as directed by ATC.
RADIO FAILURE:
In the case of RCF
climb to 7000 to NDB R
and join to holding pattern.

IAF
7000

MAPt
R

TRANSITION ALT
10000

4200

272°

272°

THR RWY 27

ELEV 1268

2 1 0 1 2 3 4 5 6 7 8 9 10

Aircraft Category		A	B		
Straight-in Approach OCA/H	NDB	1850 (580)	1850 (580)		

Aerodrome Operating Minima MDH ft x RVR(CMV)		NDB			
	NDB				

CHANGE: OCA/H.

USHARAL (UAAL)
NDB Y RWY27

AERONAUTICAL DATA TABULATION

NDB approach to RWY27 from NDB R.	
Fix/point	Coordinates
R LMM NDB	46°11'17.2" N 080°51'33.3" E
THR RWY 27	46°11'21.21"N 080°50'49.65"E